

DashBoard™

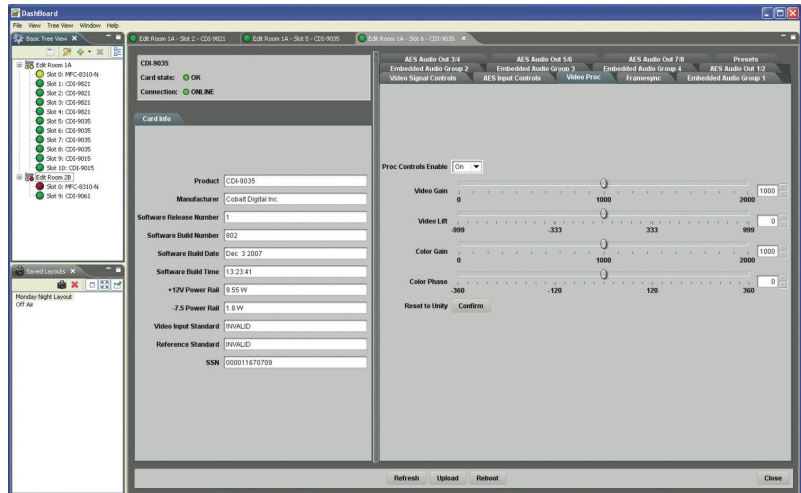
openGear

DashBoard™ is a control and monitoring application for the openGear™ platform. It is available at no cost, and works with Windows®, Mac® and Linux®.

DashBoard™ allows users to view all frames on a network with control and monitoring for all populated slots inside a frame. This simplifies the setup of numerous modules in a large installation and offers the ability to centralize monitoring. Cards define their controllable parameters to DashBoard™, so the control interface is always up to date.

In addition to extensive control and monitoring capabilities with its intuitive GUI, DashBoard™ allows for easily performed card software updates. Software update files can be downloaded from the Cobalt Digital website and then uploaded through DashBoard™.

To communicate with DashBoard™, an openGear™ frame must have the optional MFC-8320-N network card installed.



Features

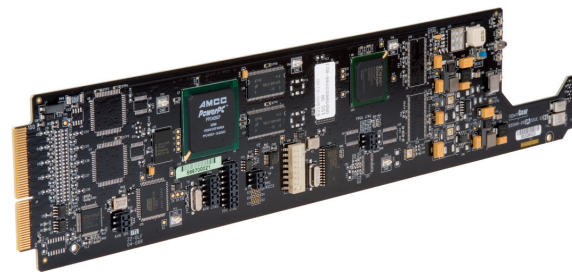
- Free application can be downloaded at www.cobaltdigital.com
- Java based and runs in Windows®, Mac® and Linux®
- Multiple frames can be connected to multiple control and monitoring stations
- Automatic discovery of cards
- Software and firmware updates via ethernet

Network Controller Card

openGear

The MFC-8320-N is an optional network controller card that allows the openGear™ frame to communicate with multiple copies of DashBoard™ or a Cobalt remote control panel via Ethernet and TCP/IP. This allows remote access to the openGear™ frame across both LAN and WAN architectures.

The network controller card can also be purchased with SNMP support, for large scale monitoring implementation.



Features

- 10/100 Mbit Ethernet Control
- Enables multiple connections to DashBoard™
- DataSafe™ feature stores all card parameters local to the frame, greatly reducing downtime if hot swapping solutions
- SNMP agent software available as an option
- Five year warranty

Ordering Information

MFC-8320-N	Network Controller Card for 8310 and 8321 openGear™ Frame - Allows remote control and monitoring of cards through DashBoard™ Software
MFC-8320-NS	Network Controller Card for 8310 and 8321 openGear™ Frame - Allows remote control and monitoring of cards through DashBoard™ Software with SNMP Software Option
SNMP-8310	Software Option for MFC-8320-N: Provides SNMP (v1 and v2) control and monitoring
DB-View	DashBoard™ Option for compiling user folders