



# UHD/LE DISK RECORDER

- Museums*
- Theme Parks*
- Concerts*
- Broadcast*
- Post Production*

**NEW!**



## HIGHLIGHTS

Record and playback  
HD-SDI and SDI Video

Uncompressed  
4:2:2 Video Recording

Drop-in replacement  
for HD tape decks

Two removable drives for  
up to 80 minutes of recording

Create video clips, loops  
and play lists from the front panel

Frame accurate control via  
RS-422 or Ethernet using  
standard control protocols

Smooth fast and  
slow motion playback

Transfer popular video  
file formats and still  
image files to the V1  
via Ethernet

Doremi Labs' new V1-UHD/LE is a full-featured, stand alone uncompressed 4:2:2 HD video disk recorder available at a breakthrough price. The V1-UHD/LE can record up to 80 minutes of video on its two internal removable SCSI drives.

Applications for the V1-UHD/LE include theme parks, museums, concerts and other stage events. The V1-UHD/LE also excels in broadcast and post production applications where it can function as a drop-in replacement for professional HD video tape recorders.

The V1-UHD/LE's real-time recording of HD Video is particularly valuable in A/V applications where the video material is updated frequently. Until now only HD video media players provided affordable HD video playback. However, without the ability to record they are impractical in today's fluid live show environments.

The V1-UHD/LE breaks through the price barrier and provides a practical solution for A/V projects that require a real-time HD video recorder. And provides uncompressed video quality for an unbeatable combination of features and image quality.

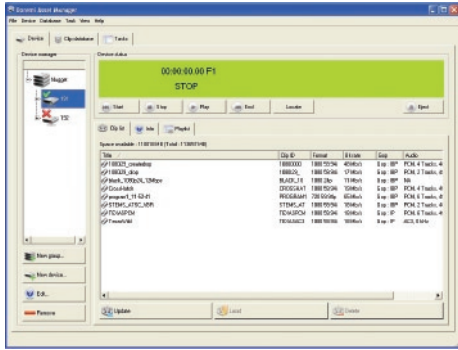
## ORDERING INFO

**V1-UHD/LE-80** Provides 80 minutes of recording time\* with two 300gig drives.

\*Calculated for 1080-24p video. Video storage time is approximate.



# V1 UHD/LE VIDEO DISK RECORDER



## Doremi Asset Manager

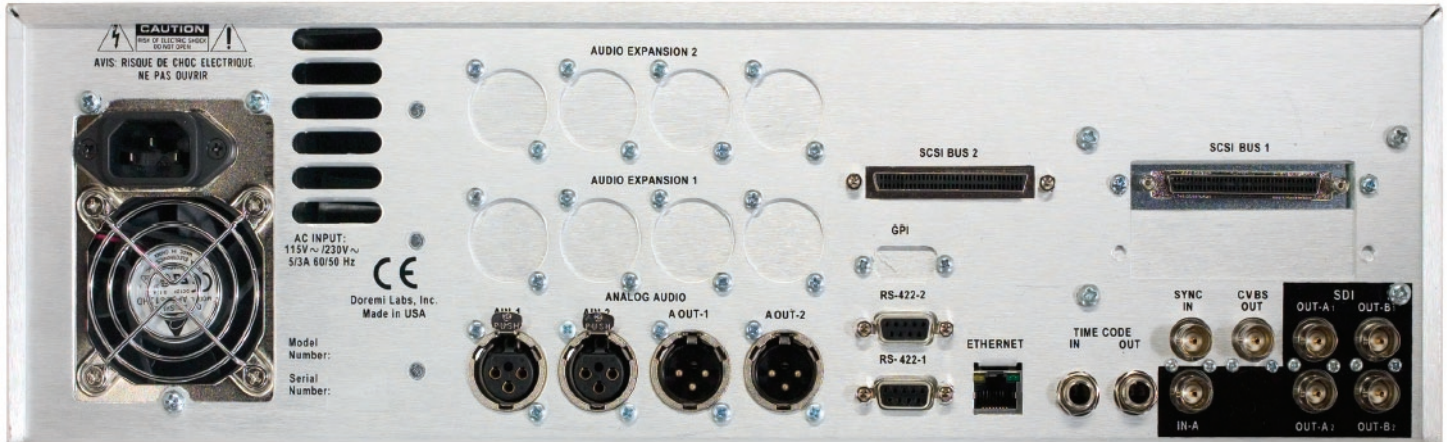
Doremi Asset Manager (DoremiAM) software transfers popular video file formats via Ethernet to the V1-HD and V1-UHD video servers. DoremiAM transfers video files such as QuickTime, MXF, AVI, and WMV to the V1 server's internal storage. Simply add the desired files or image sequences to DoremiAM's clip database and the software will transparently handle the synchronization and transfer of content.

Besides file transfers, DoremiAM provides transport controls such as shuttle, play and record. The operator can also use the software to create clips and playlists.

## Modes of Operation

The V1-UHD/LE provides several options for Local and Remote operation

- RS-422** Supports P2, VDCP (Louth), Odetics, Pioneer DVD and Panasonic RS232C protocols
- Ethernet** Assign the V1 a unique IP address for remote control via Doremi's software utilities
- Front Panel** Provides familiar VTR-like controls and the ability to create video clips and playlists



Rear panel of the V1-UHD/LE

## SPECIFICATIONS

### VIDEO INTERFACE

Uncompressed HD Video 8-bit, 4:2:2 recording  
Uncompressed SD Video 10bit, 4:2:2 recording

#### Serial Digital Interface I/O

1.5Gbit/sec (SMPTE 292M, 296M and 274M)  
800mVpp +/- 10%, 75 ohm, BNC  
270Mbit/sec (SDI-SMPTE 259M) 800mVpp, 75 ohm, BNC  
**Downconverted Composite Video Output** for monitoring only  
**Video Sync Input** Bi-level and Tri-level

### AUDIO INTERFACE

**Analog Audio I/O** 2 Channels, up to 6 channels (Option)  
electronically balanced @ +4dB into 600 ohm, XLR  
(24-bit A/D & D/A, 48kHz sampling - uncompressed)  
**AES/EBU Digital Audio I/O (Option)** up to 8 channels,  
balanced 10Vpp, 110 ohm, XLR  
**Embedded Audio on SDI I/O** up to 8 channels

**FORMATS SUPPORTED** 625 (50Hz) and 525 (60Hz)  
720p (50, 60Hz), 1080i / 1080p (24, 25, 30Hz)

### CONTROL INTERFACE

**Ethernet** 100BaseT  
**Time Code I/O** LTC, electronically balanced +4dB into 600 ohm,  
1/4" jack, VITC, ATC  
**Serial Control Inputs** 2 RS-422 using P2, Odetics, VDCP (Louth),  
Pioneer DVD and Panasonic RS232C protocols  
**GPI** 4 Input (Option)  
**Bi-Phase** Bi-Phase input, DB-9

**Power** 110/115/230/240 VAC, +/- 10%, 50/60 Hz, 85 Watts  
**Operating Temperature Range** +10° to +40° C with rated performance  
**Dimensions** 3RU - 5.25"H x 17"W x 15.25"D  
(13.35cm x 43cm x 38cm)

**Storage Media** Two 300GB SCSI removable internal hard drives

Specifications subject to change without notice. Some specifications and features listed are only available as part of specific packages or options.