

SILHOUETTE SERIES

THE SHAPE OF THE FUTURE.

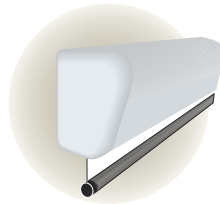


Available with or without Tab Tensioning System.

- The SILHOUETTE's case conceals everything: Mounting fixtures; Fasteners; Electrical connections; Optional controls; Dowel when retracted inside case
- Innovative case installs cleanly, and the front fascia removes easily for access to the inside components.
- Its slender fascia and endcaps are made of gently radiused aluminum and present a strikingly modern appearance.
- Four Series to choose from, each available in sizes through 96" wide.



Silhouette/Series V



Silhouette/Series E & M



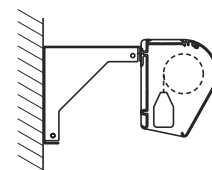
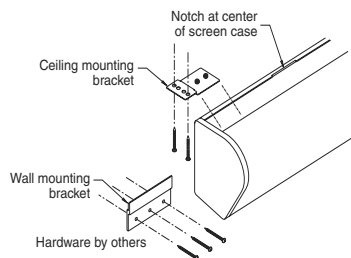
Silhouette/Series C

SILHOUETTE/SERIES V—Motorized screen with our Tab Tensioning System and choice of M1300, M2500, or HiDEF GREY viewing surface.

SILHOUETTE/SERIES E—Motorized screen with choice of Matt White, Glass Beaded, HIGH CONTRAST GREY, or acoustically transparent AT1200 or AT GREY.

SILHOUETTE/SERIES M—Manual, spring-roller operated screen with your choice of choice of Matt White, Glass Beaded, or HIGH CONTRAST GREY viewing surface.

SILHOUETTE/SERIES C—Manual, crank-operated screen with our Tab Tensioning System and your choice of M1300, M2500, or HiDEF GREY viewing surface..



Mounting on Extension Wall Brackets



Silhouette/Series M installation with custom wooden case by Harmony Interiors. Photography: © Scott Arthur, Weaverville, NC. U.S.

SYSTEM OPTIONS

- **CASE FINISHES**—Lightly textured finish in choice of dove grey (standard), black or white.
- **EXTRA DROP**—Up to 12' overall height, either screen surface color or black.
- **BLACK MASKING BORDERS**—Optional for Series E and Series M in AV format, standard for all others.
- **CONTROL OPTIONS**—Refer to page 4. Controls may be built into case.

Dimensions, drawings and specifications available at:

www.draperinc.com/go/SilhouetteV.htm

www.draperinc.com/go/SilhouetteE.htm

www.draperinc.com/go/SilhouetteM.htm

www.draperinc.com/go/SilhouetteC.htm

U.S. Patent Nos. 5,296,964 and 6,111,694.

This screen is available with optional Quiet Motors. See page 4 for more details.



DIMENSIONS & DATA—SILHOUETTE SERIES

	Size H x W	Series M		Series E		Series V		Series C			
		Case Length	Net Wt. (lbs.)	Case Length*	Net Wt. (lbs.)	Case Length*	Net Wt. (lbs.)	Case Length*	Net Wt. (lbs.)		
AV Format	50" x 50"	52½"	18	61½"	27	72¾"	33	72¾"	30		
	60" x 60"	62½"	21	71½"	29	83¾"	35	83¾"	32		
	70" x 70"	72½"	25	81½"	34	93¾"	40	93¾"	37		
	84" x 84"	86½"	28	95½"	40	109"	46	109"	43		
	72" x 96"	99"	29	108"	48	119¾"	57	119¾"	54		
	96" x 96"	99"	33	108"	53	122½"	59	122½"	56		
	Nominal Diagonal	Series M		Series E		Series V		Series C			
		Image Area H x W (E/M)	Case Length	Net Wt. (lbs.)	Case Length*	Net Wt. (lbs.)	Image Area H x W (V/C)	Case Length*	Net Wt. (lbs.)	Case Length*	Net Wt. (lbs.)
NTSC Video Format (4:3)											
	6"	42½" x 56½"	62½"	20	71½"	26	42½" x 56½"	79¼"	39	79¼"	36
	7"	50" x 66½"	72½"	24	81½"	31	50" x 66½"	89¼"	43	89¼"	40
	100"	60" x 80"	86½"	25	95½"	37	60" x 80"	103¾"	47	103¾"	44
	10'	69" x 92"	99"	29	108"	45	72" x 96"	119¾"	54	119¾"	51
HDTV Format (16:9)											
	65"	31¾" x 56½"	62½"	19	71½"	25	31¾" x 56½"	77½"	39	—	—
	73"	36" x 64"	72½"	23	81½"	30	36" x 64"	84¾"	42	—	—
	82"	40½" x 72"	77"	24	86"	33	40½" x 72"	93¾"	47	—	—
	92"	45" x 80"	86½"	25	95½"	37	45" x 80"	102¾"	50	102¾"	47
	106"	52" x 92"	99"	29	108"	45	52" x 92"	114¾"	54	114¾"	51

*Optional built-in controls will increase length of case. In Series V and C, additional drop also increases case length.