

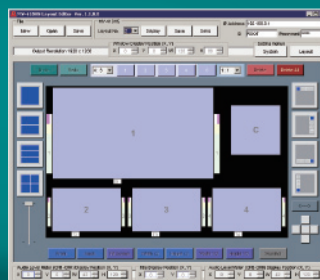
HD/SD High Resolution Quad Viewer

MV-410HS

The MV-410HS is a 4-channel multi viewer that supports mixed input of HD-SDI, SD-SDI and analog composite signals. High-resolution video output using a DVI terminal is included as standard. Support is also provided for user-created patterns and video transfer over a LAN connection.



- Support for mixed input of HD-SDI, SD-SDI, and analog composite signals (asynchronous input is possible)
- Support for mixed input of different frame rate signals
- High-resolution output: DVI and analog RGB terminals are provided as standard for split-screen video output for enabling easy usage on large screens and computer monitors.
- Includes layout editor for enabling the user to make any changes to split-screen patterns from a computer.
- Network video transfer function: LAN interface provided as standard for enabling transfer of output video over the network
- Audio level display: Includes level display function for embedded audio signals superimposed on HD/SD-SDI (8ch display)
- Includes tally display, title display, and time display functions
- Video loss detection function
- In addition to the standard functions, other additional functions are also available for installation as options
 - SNMP support: Enables external monitoring of the power supply and fan alarm status (Future support is planned)
 - Enables installation of redundant power supply



Layout editor

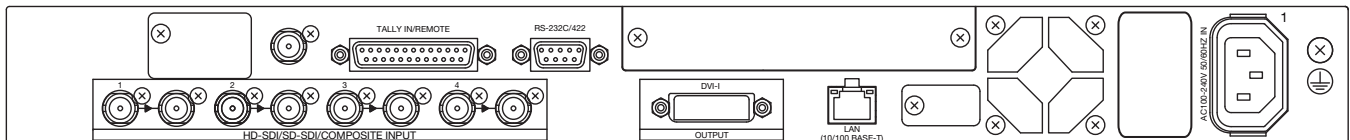


Free layout image

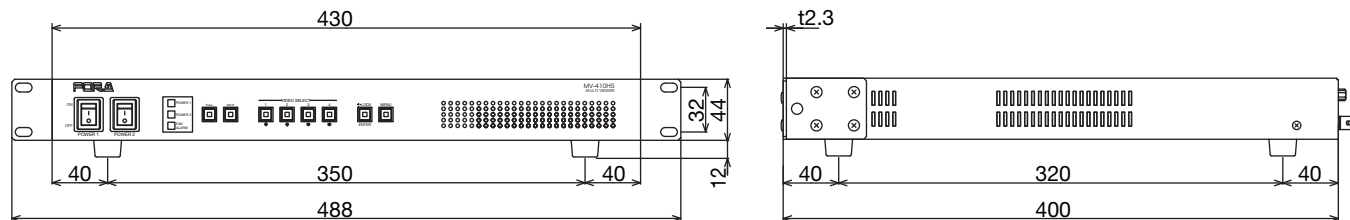
Specifications

● Standards	HD: 1080/60i, 1080/59.94i, 1080/50i, 720/60p, 720/59.94p, 720/50p SD: 525/60 (NTSC), 625/50 (PAL)
● Video Input	4 inputs from any of the signals below (mixed input and asynchronous input are possible) HD-SDI: 1.485Gbps or 1.485/1.001Gbps, 75Ω, BNC SD-SDI: 270Mbps, 75Ω, BNC Analog composite: 1.0 Vp-p, 75Ω, BNC
● LTC Input	1 input SMPTE time code appr. 1.0Vp-p within ±6dB
● Video Output	DVI output (Outputs Digital and Analog outputs at the same time) DVI-I connector, 1 output Resolution: 1920 x 1200, 1600 x 1200, 1280 x 1024, 1360 x 768, 1440 x 900, 1680 x 1050, 1920 x 1080, 1280 x 720 *No input/output frame rate converter. Frame rate difference between input and output results the repeat frame or drop frame.
● Active loop through output (for a monitor)	HD-SDI: 1.485Gbps or 1.485/1.001Gbps SD-SDI: 270Mbps 75Ω, BNC *Available only when input is either HD-SDI or SD-SDI. *No jitter correction. The jitter in the input will be carried to the active loop through output. The total jitter may exceed the jitter limit of signal standard.
● Quantization	8-bit
● I/O Delay	1 - 2 frames
● Split-screen Patterns	Full screen, user-selected screen
● Character Display	Display characters: Maximum of 16 characters x 1 line per input channel Character types: Alphanumeric, Japanese kana, symbols
● Tally Display	Displayed in each input screen frame (red or green)
● Audio Level Display	Displayed in each input screen frame, 8 channels of embedded audio signals
● Time Display	Enables display of the current time (Internal clock or LTC selectable) *Accuracy within ±10 seconds per month (at 25°C)
● Interfaces	RS-232C/RS-422/RS-485: D-sub 9-pin (male), 1 line Transmission rate: 9600/19200/38400 bps, data length: 8 bits, stop bit: 1 bit, parity: NONE/ODD/EVEN TALLY IN: D-sub 25-pin (female) *Shared with REMOTE IN 4 inputs x 2 colors (red or green color frame display) TTL negative logic level signal or make-contact input REMOTE IN: D-sub 25-pin (female) *Shared with TALLY IN Switching between full screen and split-screen display TTL negative logic level signal or make-contact input LAN: 10Base-T/100Base-TX, RJ-45 (CAT5 support), 1 line Video transfer: DVI/analog RGB output and transfer of the same screen with size reduction, JPEG compression
● Layout Editor	Setting of the split-screen video size and split-screen video position
● Temperature/Humidity	0°C - 40°C / 30% - 90% (no condensation)
● Power / Consumption	100VAC - 240VAC ±10%, 50Hz/60Hz / 60VA (57W) (at 100V)
● Dimensions / Weight	430 (W) x 44 (H) x 400 (D) mm EIA 1RU / 5.5kg (when the redundant power option is installed)
● Accessories	Operation manual, AC cord, Rack mount brackets, CD-R (Layout editor, Live viewer)
● Options	SNMP support (Monitoring of power supply and alarm status) (Future support is planned) / Redundant power supply

Rear Panel



External Dimensions



FOR-A COMPANY LIMITED

Head Office : 3-8-1 Ebisu, Shibuya-ku, Tokyo 150-0013, Japan

FOR-A America Corporate Office : 11125 Knott Ave., Suite #A, Cypress, CA 90630, U.S.A.

FOR-A America East Coast Office : 1065 Avenue of the Americas, Suite #1701A, New York, NY 10018, U.S.A.

FOR-A America Distribution & Service Center : 2400 N.E. Waldo Road, Gainesville, FL 32609, U.S.A.

FOR-A Latin America & the Caribbean : 5200 Blue Lagoon Drive, Suite 760, Miami, FL 33126, U.S.A.

FOR-A Corporation of Canada : 425 Queen St. W. #211, Toronto, Ontario M5V 2A5, CANADA

FOR-A UK Limited : UNIT C71, Barwell Business Park, Leatherhead Road, Chessington Surrey, KT9 2NY, U.K.

FOR-A Italia S.r.l. : Viale Europa 50 20093, Cologno Monzese (MI), Milan, ITALY

FOR-A Corporation of Korea : 801 Dangsan Bld., 53-1 Dangsan-Dong, Youngdeungpo-Gu, Seoul 150-800, Korea

FOR-A China Limited : Room C302 Tia Hao International Building, 116 Zizhu-Yuan Road, Hai Diang District, Beijing, China

Homepage: <http://www.for-a.com/>

+81 (0)3-3446-3936

+1 714-894-3311

+1 212-861-2758

+1 352-371-1505

+1 305-931-1700

+1 416-977-0343

+44 (0)20-8391-7979

+39 02-254-3635/6

+82 (0)2-2637-0761

Fax : +81 (0)3-3446-1470

Fax : +1 714-894-5399

Fax : +1 212-861-2793

Fax : +1 352-378-5320

Fax : +1 305-264-7890

Fax : +1 416-977-0657

Fax : +44 (0)20-8391-7978

Fax : +39 02-254-0477

Fax : +82 (0)2-2637-0760

