

Chameleon Series

*Expandable
Matrix
Routing
Switchers*



**KNOX VIDEO
TECHNOLOGIES**

Chameleon 256



Features

- Expandable to 256 x 256
- Audio and Video matrices linkable
- 200 MHz video bandwidth
- Simple RS232 protocol
- Battery-backed
- 3-year warranty

Applications

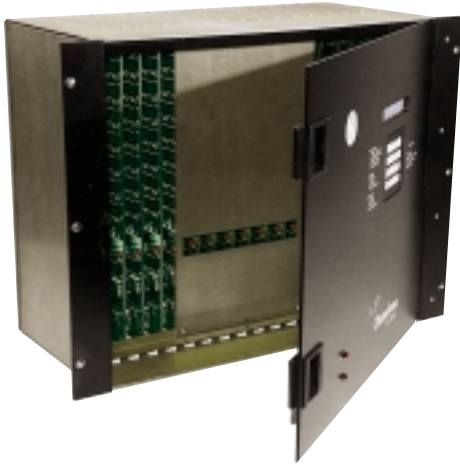
- Broadcast
- Distance Learning
- Presentation Systems
- Prison Systems
- Sports Bars, Restaurants
- Theme Parks

The Chameleon 256 has the largest matrix capacity of all Knox switchers. Expandable from 32x32 up to 256x256 and providing high-performance broadcast specs, the Chameleon 256 can handle the needs of almost any application.

Matrix configurations are assembled in multiples of 32 by inserting audio or video cards into a 12U rack frame via the hinged front panel. Audio and video frames are linked together via serial cable; audio-follows-video or audio can be routed separately. All current and stored patterns are backed up in non-volatile memory. The internal mil-spec power supply is 110v/230v auto-sensing; a redundant power supply is optional.

The matrix is controlled via front panel controller or RS232. Several command options such as SALVO, batch, and event control are offered. Other control options include computer, remote keypad, third party controllers or all three.

Chameleon 64



The Knox Video Chameleon 64 modular audio/video routing switcher is expandable up to a full 64x64 matrix in a single 8U rack frame*.

These baseband matrix routing switchers route NTSC or PAL video and mono or stereo, balanced or unbalanced audio. Audio can follow video or be routed independently.

Matrix configurations are assembled by inserting cards onto the backplane in the rack frame. Input and output arrays are assembled in multiples of eight. Some common matrix arrays are 24x24 and 32x32.

The Chameleon 64 crosspoint matrix is controlled by a compact RS232 protocol via computer, an optional remote control keypad, or all three.

* Balanced stereo audio (BAS) is available in up to a 32x32 matrix in a single 8U rack frame. Larger BAS configurations require a second 8U rack frame.

Features

- Expandable to 64 x 64
- Audio and Video matrices linkable
- 10 MHz video bandwidth
- Simple RS232 protocol
- Battery-backed
- 3-year warranty

Applications

- Education
- Medical
- Government
- Stadiums/Theme Parks
- Sports Bars/Restaurants

Chameleon HB

Features

- Expandable to 256 x 128
- Audio and Video matrices linkable
- 200 MHz video bandwidth
- Simple RS232 protocol
- Battery-backed
- 3-year warranty

Applications

- Broadcast
- Distance Learning
- Media Retrieval
- Stadiums, Theme Parks
- Sports Bars, Restaurants

The Chameleon HB is a high-bandwidth, modular routing switcher expandable to a 256x128 audio or video matrix in a 9U rack frame. The matrices may be linked for full audio-follow-video routing. Audio may also be routed independently. The audio and video matrices do not need to be the same size.

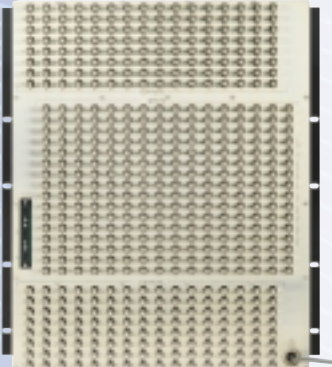
Matrix configurations are assembled in multiples of sixteen. Insertion cards are plugged into a 9U rack frame via a hinged front panel.

The crosspoint matrix is controlled by a simple, yet versatile RS232 protocol. Control options include computer, front panel keypad, remote keypad or all three.



Technical Specifications

Chameleon 256



VIDEO

Frequency Response DC to 200 MHz, @ 300mv, <-3dB @ 150 MHz
 Typ -6dB @ 200 MHz @ 1.0v, <-3dB @ 115 MHz
 Input Impedance 75 ohm
 Output Impedance 75 ohm
 Crosstalk all hostile: one hostile:
 Typ<-70dB@5MHz Typ<-40dB@200MHz
 Typ<-55dB@20MHz
 Typ<-25dB@100MHz
 Connectors BNC

BALANCED AUDIO

Hum and Noise <-90dB
 Frequency Response 20 Hz to 50 KHz +/- 1/4 dB
 Level 0, 4, or 16 dB, clipping at 18 dB
 Impedance Bridging, or 600 ohm termination
 Crosstalk <-90dB at 20 KHz
 Connectors Phoenix screwtype, removable

UNBALANCED AUDIO

Frequency Response 20 Hz to 30 KHz
 Input Level up to 2 volts p-p
 Input Impedance 100 K
 Output Impedance 1 K
 Crosstalk <-85 db at 1KHz
 Connectors RCA

POWER

Input 115 VAC (105-125), 50/60 Hz
 Power Supply 50 watt switcher, supplying +/-8 v at 2 A max.

DIMENSIONS

12U rackmount chassis with hinged front panel
 21" high x 19" wide x 10" deep

Chameleon 64



VIDEO

Frequency Response DC to 10MHz, <-3db @ 16MHz
 Video Levels 1 v p-p composite NTSC, PAL, SECAM
 Input Impedance 75 ohms
 Output Impedance 75 ohms
 Crosstalk less than - 70 dB at 8 MHz
 Connectors BNC

BALANCED AUDIO

Hum and Noise <- 90dB
 Frequency Response 20Hz to 50KHz +/- 1/4dB
 Level 0 or +4dB
 Impedance Bridging, or 600 ohm termination
 Crosstalk <- 90dB @ 20KHz
 Connectors Phoenix screwtype, removable

UNBALANCED AUDIO

Frequency Response 20Hz to 30KHz
 Input Level 1 v p-p unbalanced
 Input Impedance 100 K unbalanced
 Output Impedance 1 K unbalanced
 Crosstalk less than -85dB @ 1KHz
 Connectors RCA (unbalanced) Connectors

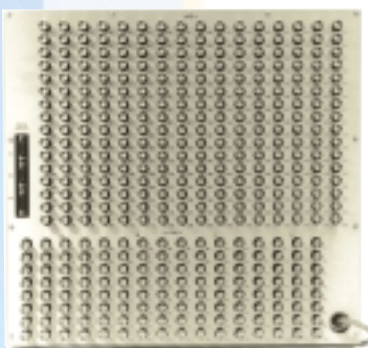
POWER

Input 115 VAC (105-125), 50/60Hz
 Power Supply 50 watt switcher, supplying +/-8 v at 2 A max.

DIMENSIONS

8U rackmount chassis with hinged front panel
 14" high x 19" wide x 10" deep

Chameleon HB



VIDEO

Frequency Response DC to 200 MHz, @300mv, <-3dB@150 MHz
 Typ -6dB@200MHz@1.0v, <-3dB@115 MHz
 Input Impedance 75 ohm
 Output Impedance 75 ohm
 Crosstalk all hostile: one hostile:
 Typ<-70dB@5MHz Typ<-40dB@200MHz
 Typ<-55dB@20MHz
 Typ<-25dB@100MHz
 Connectors BNC

BALANCED AUDIO

Hum and Noise <-90dB
 Frequency Response 20 Hz to 50 KHz +/- 1/4 dB
 Level 0,4, or 16 dB, clipping at 18 dB
 Impedance Bridging, or 600 ohm termination
 Crosstalk <-90dB at 20 KHz
 Connectors Phoenix screwtype, removable

UNBALANCED AUDIO

Frequency Response 20 Hz to 30 KHz
 Input Level up to 2 volts p-p
 Input Impedance 100 K
 Output Impedance 1 K
 Crosstalk <-85 db at 1KHz
 Connectors RCA

POWER

Input 115 VAC (105-125), 50/60 Hz
 Power Supply 50 watt switcher, supplying +/-8 v at 2 A max.

DIMENSIONS

9U rackmount chassis with hinged front panel
 15.75" high x 19" wide x 10" deep



**KNOX VIDEO
 TECHNOLOGIES**

8547 GROVEMONT CIRCLE
 GAITHERSBURG, MD 20877
 TEL: 301 840 5805
 FAX: 301 840 2946

www.knoxvideo.com