

Configurator

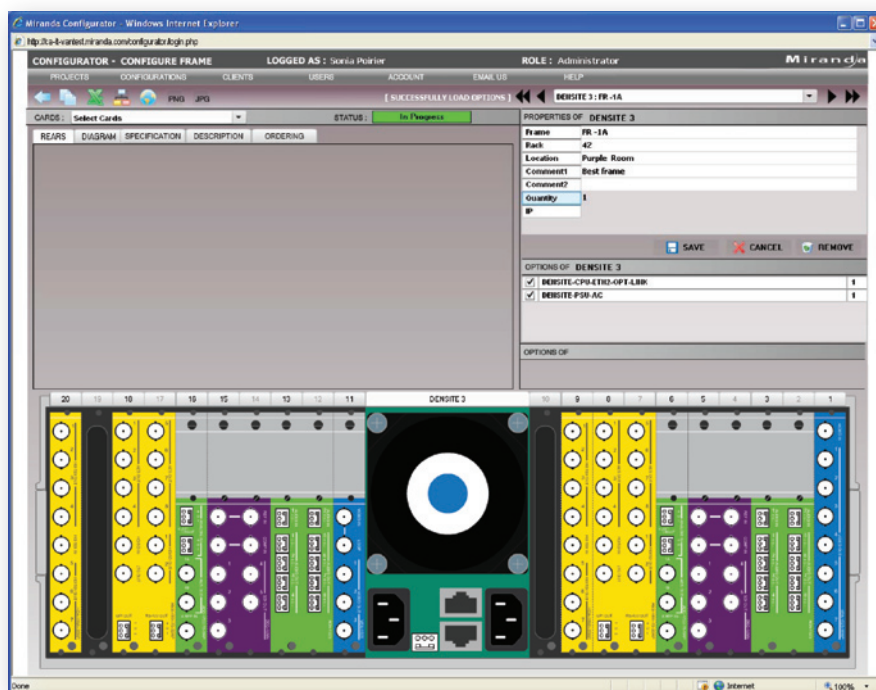
Web-based Densité frame configuration tool

Miranda's Configurator is a free web-based tool which speeds up the process of selecting the right Densité frame, modules and rears for a specific application. This web tool guides users through the frame selection and population processes, and ensures full compatibility between all the chosen elements for correct operation. During the selection process, a list

of all available Densité modules is presented to the user, and the selected modules can be dragged-and-dropped along with their rears to the frame. Configurator is also a great reference tool for obtaining information about specific Densité modules and the available rears, as well as the block diagram, specification, and ordering information.

KEY FEATURES AND BENEFITS

- Web-based tool speeds up the configuration of Densité frames
- Compatibility checking on frame, modules and rears
- Easy drag-and-drop frame population
- Access to detailed information about Densité modules
- Configuration load/save/print functions
- Configurations can be exported to an Excel file for reference and support
- Simplifies quotation requests



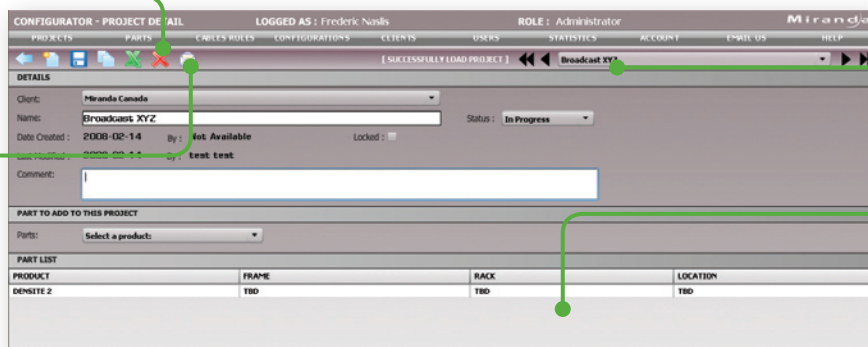
Information on the specific module

Properties of the selected module

Visual representation of the Densité frame

Available options for the selected module

Export this project to Excel file



Request a quotation for this project

Multiple projects can be managed

One project can have multiple frames

Configurator is available for free at: <http://www.miranda.com/configurator/>