

iControl Solo

Stand-alone PC-based control

iControl Solo is a stand-alone, PC-based control GUI for Densité modules, which is provided for free with Densité modules. It provides easy 'tree-based' control and configuration of up to 100 Densité Series modules, and does not require Miranda's Application Server. Operators are provided

with quick access to devices and parameters for fast and easy control. More advanced control requirements, demanding simultaneous, multi-user monitoring and error logging can be met with the iControl Web and iControl PM applications (see pages 533, 520).

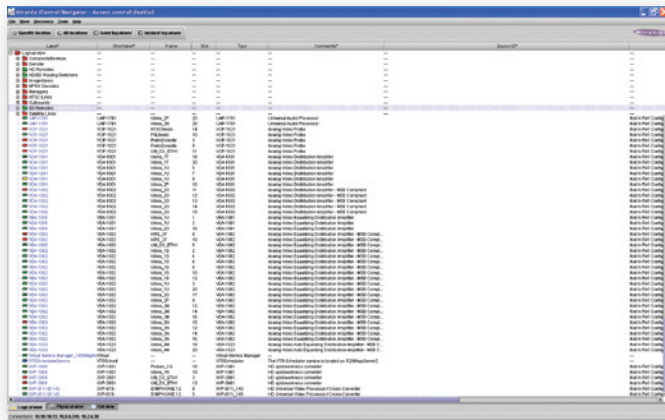
Recommended PC requirements

- Pentium 4 1.5 GHz, 512 MB RAM, 100 MB of free hard drive space
- Windows XP™ Professional
- Ethernet NIC
- 1024 x 768 display resolution or better

ORDERING INFORMATION

- IC-SOLO iControl Solo includes: iControl Navigator, Drivers for all Miranda cards and devices. Provides ability to interface to up to 100 devices.
- IC-USB USB to RS-422 adaptor

Note: This software can also be downloaded directly from Miranda's website www.miranda.com



Easy to use 'tree-based' control and monitoring

