

## FMX-GE1000

Stand-alone Gigabit Ethernet Media Converter



### SUMMARY

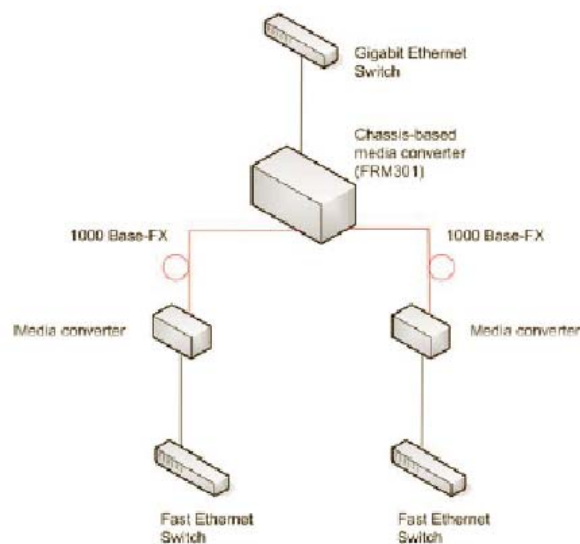
The FMX-GE1000 is a stand-alone optical fiber media converter for 10/100/1000Base TX to 1000Base-SX/LX. When auto-negotiation is selected, two units will automatically tailor themselves to convert speed or duplex, depending on your specific network needs. Another unique feature of the FMX-GE1000 converter is the use of a common PCB card which may either be placed in the rack (FMX301 series line card) or used as a stand-alone converter.

### FEATURES

- Ability to force 10Mbps or 100Mbps or 1000Mbps on UTP port
- Auto-Negotiation on UTP port
- Compatible with FMX301
- Full or Half-Duplex on UTP port
- Max. Packet Size: 1632 Bytes
- Store and Forward Switching Mechanism
- Supports Auto / Force Mode on FX port
- MAC address: 8KBuffer: 128Kbyte

### SPECIFICATIONS

- Standards:** IEEE 802.3 10Base-T, 802.3u 100Base-TX, 802.3ab 1000Base-T and 802.3z 1000Base-SX/LX standards
- Connectors:** RJ45 and SFP LC
- LEDs:** PWR, LLF, FX link, TP Link/Speed/Duplex
- Power:** External AC adapter; 12VDC@1A
- Power Consumption:** < 4W
- Temperature Range:** 0 — 50°C (Operating), 0 - 70°C (Storage)
- Dimensions(DxWxH):** 85.6mm x 122.6mm x 20mm
- Weight:** 340g



### CONTACT

1-(800)-4TV-TEST (US and Canada)  
1-(800) 488-8378  
1-(516)-671-7278  
FAX 1-(516)-671-3362