

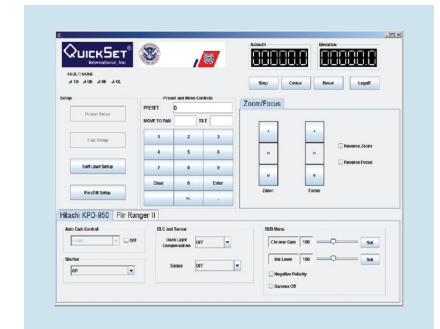
The SeaView system is a video surveillance system designed for harsh environments. Components of the SeaView system are a QPT90, Unicom™ controller, and a touchscreen controller. The QPT90 in this system is an environmentally sealed unit (IP 66 compliant). It is built to withstand winds of up to 100 mph. This unit is available in 24 VDC. The QPT90 has a built in heater, and an internal processor that handles pan and tilt commands that are sent to it via the QuickSet controller. The QPT90 is a rugged unit built to withstand harsh environment conditions.



This system is controlled with a QuickSet's Unicom tabletop/rack mount controller with touch screen control for expandable operations. Unicom is a universal type controller that can be interfaced with IP Ethernet, RS-232/422, and USB driven devices. QuickSet has employed touch screen technology to aid user interaction during high stress situations. All critical camera and Marine-90 controls can be operated by the touch of an on-screen button.



The SeaView user interface can run automatic search programs, called tours, as prescribed by an operator. An operator can pre-select positions, called presets, that he wishes to view in a tour. The tours will run continuously until overridden by an operator wishing to manually control the SeaView. The SeaView has 32 programmable presets and 3 programmable tours.



The SeaView is optimized for day/night, all weather conditions. It is an ideal system for long-range surveillance in coastal, harbor, and border environments.

*SPECIFICATIONS SUBJECT TO CHANGE WITHOUT NOTICE

Pan and Tilt Specifications

Voltage:	24 VDC
Pan speed:	1°/s min 8°/s max
Tilt Speed:	1°/s min 4°/s max
Pan Rotation:	±180°
Tilt Rotation:	±90°
Load Capacity:	130 lbs. (59 kg) mobile operation 150 lbs. (68 kg) fixed installation
Repeatability:	0.25°
Pan Motion Range:	±180°
Tilt Motion Range:	±90°
Position Feedback:	Potentiometers
Color:	Marine White
Serial Link:	RS32
Enclosure:	Marine, Hidden wire
Environmental enclosure:	Stainless Steel Base, heater included
Dual Camera Control	
Azimuth/Elevation:	Resolved to tenths of a degree

VISIBLE CAMERA SPECS:

Detector Type:	Interline CCD with micro lenses on chips
Spectrum (Band 1,2,3)	450 to 690nm
Array Size:	768 x 494
Sensitivity:	0.01 1x
Settings:	Auto/Manual (2-3 Steps)
Number of Pixels:	379,392
Pixel Pitch:	48um
TV Line	480
Aspect ratio:	4:3
Video:	Composite
Format:	NTSC
Frame rate:	60 Hz
Exposure:	Auto/Manual (2-3 Steps) (Essential)
Shutter:	11 steps selectable (2-3 Steps) (Essential)
Gain:	Auto/Manual (2-3 Steps) (Essential)
Iris:	Video or DC Controlled (Variable resolution) (Essential)
White Balance:	3 control modes selectable (1) Auto tracking (2) Preset (3) Manual
Color Balance:	Adjustable (R.B) (2-3 Steps)
Image Polarity:	Selectable (2-3 Steps)
Backlight Compensation:	9 photometric areas (2-3 Steps)
Brightness:	Adjustable (2-3 Steps)
Communication Interface:	RS232/RS422
Input Voltage:	12VDC
Power:	< 6 W
Weight:	1.63 lbs (0.74 kg.)
Dimensions:	4.8"L x 2.52"W x 2.48"H (121.9mm L x 64mm W x 63mm H)
Environmental:	Heat controlled housing with sunshield required

*SPECIFICATIONS SUBJECT TO CHANGE WITHOUT NOTICE

VISIBLE LENS SPECS:

Type:	Zoom
Focal length:	10-250mm (Commandble variable resolution)
F-Number (F/)	F/1.5
Format:	1/2"
Mount:	C-mount
Field of View (FOV) (deg);	35.3-1.5° (Commandble variable resolution) (Status-On request)
Magnification (M):	25X
Focus:	(Commandble variable resolution) (Status-Always)
Weight:	5.07 lb. (2.3 kg.)
Dimensions:	4.80" H x 4.80" W x 9.47" L (122mm H x 122mm W x 240.5mm L)
Zoom location:	Presets (feedback) (Status-On request)
Focus location:	Presets (feedback) (Status-On request)

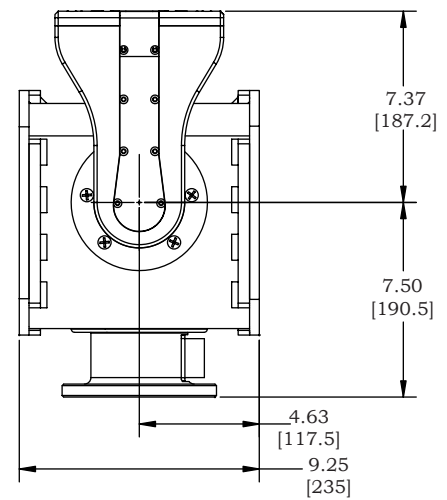
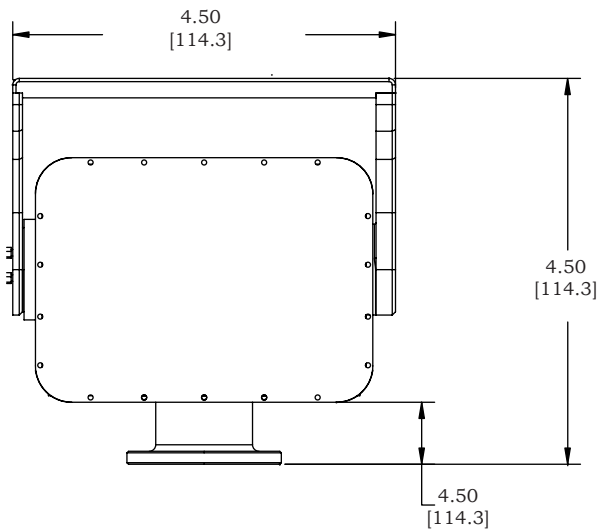
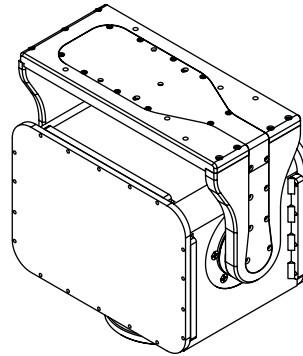
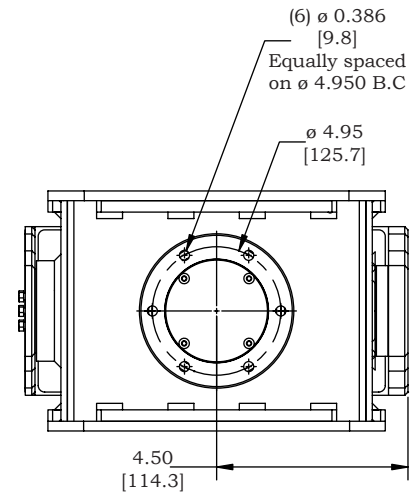
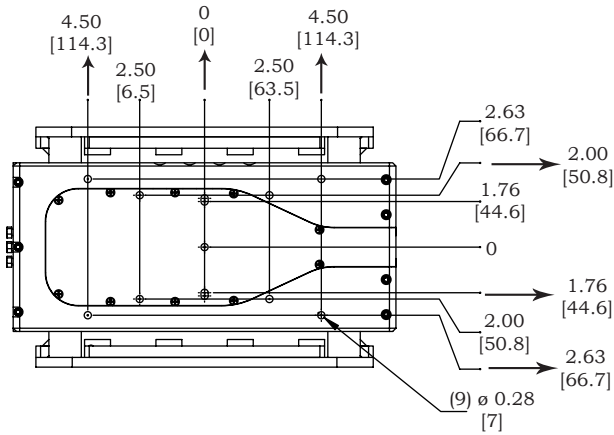
LWIR Long Wave IR Type:	Germanium Hard Carbon Coated
Focal Length:	100-500mm
F-Number (F/):	F/4.0
Long Range WFOV:	50mm (11° x 8.2°)
Longe Range NFOV:	250mm (5.5° x 4.1°)
Extended Range WFOV (Digital):	100mm (5.5° x 4.1°)
Extended Range NFOV (Digital):	500mm (1.1° x 0.8°)
Control Interfaces all nodes:	
Hardwired:	Video - Coax RS32/RS422/TCP/IP (LAN, Internet) (Single or dual twisted pair)
Fiber Optic:	Single or multinode multiplexed Video: RS232/RS422/TCP/IP

INFRARED SPECS:

Video Format:	S-video, and RS-170 or CCIR
Serial Interface:	RS422 or RS232
Power Requirements:	9-28 VDC
Heaters:	Lens defroster 80 W@12 VDC
Environmental Qualifications:	Fully ruggedized/Mil-STD-810F-qualified for field operations
Operating Temperature Range:	-26°F to 131°F (32°C to +55°C)
Camera Controls:	On/Standby/Off, dual optical zoom FOV change, digital zoom 2x and 4x, from lens defroster, focus, polarity, reticle on/off, manual gain, manual level, NUC sensitivity adjustment, freeze frame, auto span with histogram equalization
Mounting:	1/4-20 threaded base plate
Dimensions:	20"long x 6.5" diameter
Weight:	<20 lbs.
Detector:	320 x 240 InSb FPA
Spectral Band:	3-5 μm
Optics:	f/4.0
Nominal Field of View:	
Long Range:	WFOV: 50 mm, 11° x 8.2° NFOV: 250 mm, 2.2° x 1.6°
Extended Range:	WFOV: 100 mm, 5.5° x 4.1° NFOV: 500 mm, 1.1° x 0.8°
Digital Zoom:	2x, 4x
FPA Cooling:	Closed-cycle Stirling
Thermal Sensitivity:	0.025°C @ 23.0°C

*SPECIFICATIONS SUBJECT TO CHANGE WITHOUT NOTICE

Dimension are in inches [mm]



*SPECIFICATIONS SUBJECT TO CHANGE WITHOUT NOTICE

9/30/2005