

QuickSet has over seven decades of experience in the design, manufacturing and maintenance of support products providing unsurpassed performance, reliability and service. Durability and reliability are our highest engineering priorities. These standards have helped make Quickset a worldwide leader in support systems technology.

When your product depends upon the performance of a tripod or pan & tilt unit the Hercules Series has proven reliable in countless critical applications. This is a result of its unmatched quality, durability and torsional stability.

Today, QuickSet is set apart in the world of instrument positioning suppliers by providing reliable and quality support systems, combined with custom tailored solutions to meet the most demanding requirements of every user.

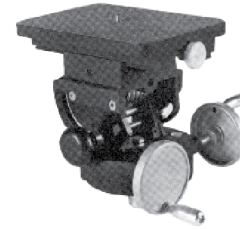


Specifications

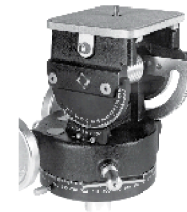
Product Number:	4-53021-8 Tripod with Elevator	4-53220-6 Tripod with Elevator - Short	4-54504-2 Pedestal - Mobile	4-53031-7BQ Tripod - Extended Height
Load Capacity:	150 lbs (68 kg)	150 lbs (68 kg)	80 lbs (36 kg)	150 lbs (68 kg)
Maximum Height:	70" (178 cm)	57" (144 cm)	56" (142 cm)	175" (444 cm)
Minimum Height:	33.5" (85 cm)	26" (66 cm)	38" (96.5 cm)	90" (228 cm)
Dimensions (Transport Mode):	40.5" x 12.5" (102 x 31.3 cm)	30" x 12.5" (76 x 31.3 cm)	38" x 14" (97 x 35 cm) (Not Assembled)	88" x 13 3/4" x 10" (223.5 x 33 x 26 cm)
Maximum Spread (Diameter):	73" (185 cm)	50.5" (128 cm)	34" (85 cm)	139" (353 cm)
Weight:	23 lbs (10.4 kg)	18 lbs (8.2 kg)	35 lbs (15.9 kg)	46 lbs (20.9 kg)
Leg Sections:	2	2	N/A	2
Column Travel:	18" (45 cm)	18" (45 cm)	18" (45 cm)	17.5" (44.4 cm)
Column Outside Diameter	2" (5 cm)	2" (5 cm)	2" (5 cm)	2" (5 cm)
Wheel Size:	N/A	N/A	4" x 1" (10 x 2.5 cm)	N/A
Feet Ø:	4" (10 cm) Self Leveling 5/8" Hole for Spiking	4" (10 cm) Self Leveling 5/8" Hole for Spiking	N/A	4" (10 cm) Self Leveling 5/8" Hole for Spiking

Camera Heads

Product Number:	4-52217-3 Head-Geared w/ Large Platform	4-52926-9 Head-Geared w/ Calibrations	4-52304-9 Head-Cam
Load Capacity:	50 lbs (22.7 kg)	30 lbs (13.6 kg)	80 lbs (36.3 kg)
Dimensions Transport Mode:	8" x 10.5" x 11.5" (20 x 26.6 x 29.2 cm)	8" x 9.5" x 10.75" (20 x 23.7 x 26.9 cm)	11.75" x 8.25" x 5.5" (20 x 23.7 x 26.9 cm)
Weight:	12 lb (5.5 kg)	9 lb (4.1 kg)	13.5 lb (6.1 kg) w/ 2 Control Arms
Control Arms:	0	0	2
Mounting Type:	Special Post 1.25"Ø x 1.5"L (31.5"Ø x 38 mmL)	Special Post 1.25"Ø x 1.5"L (31.5"Ø x 38 mmL)	Special Post 1.25"Ø x 1.5"L (31.5"Ø x 38 mmL)
Pan Movement:	360°	360°	360°
Tilt Movement:	45° up, 45° down	45° up, 90° down	35° up, 45° down
Gear Ratio:	Pan - 1:96 Tilt - 1: 129	Pan - 1:96 Tilt - 1: 129	N/A
Camera Screw:	3/8-16	1/4-20	1/4-20 - 3/8-16
Camera Plate (Adjustable):	9" x 6" (22.5 x 15 cm)	4" x 4" (10 x 10 cm)	4.5" x 10" (11.25 x 39 cm)



4-52217-3



4-52926-9



4-52304-9

Pedestal & Dolly

Product Number:	4-56021 Dolly	4-58001-5 Pedestal-Stationary
Load Capacity:	500 lbs (227 kg)	80 lbs (36.3 kg)
Maximum Height:	7.5" (18.7 cm) (Not Adjustable)	50" (127 cm)
Minimum Height:	N/A	32" (81 cm)
Dimensions (Transport Mode):	31" x 17.5" x 10.5" (78 x 44.5 x 26.6 cm)	29" x 12" (73 x 30 cm)
Maximum Spread:	47" (119.3 cm)	N/A
Weight:	19 lb (8.6 kg)	16.5 lb (7.5 kg)
Column Travel:	N/A	18" (45 cm)
Column Outside Diameter:	N/A	2" (5 cm)
Mounting Base:	N/A	Flange, 0.563 Hole Through 4 PL. on 7 Ø B.C.
Wheel Diameter:	4" x 1" (10 x 2.5 cm)	N/A



4-56021



4-58001-5

Adapters & Accessories

Transit Adapter
4-55901-9A



Fits	Hercules Column 1.25" (3.17 cm) I.D.
Weight	1.4 lbs (0.63 kg)

Conversion Adapter
4-69020-2



Fits	Hercules Column 1.25" (3.17 cm) I.D.
Accepts	Gibraltar Heads with 1.75" (4.4 cm) Post
Weight	13 oz (0.372 kg)

Conversion Adapter
4-75760-5



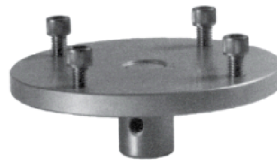
Fits	Hercules Column 1.25" (3.17 cm) I.D.
Accepts	Samson Sleeve Mount Heads Post O.D. 1.75" (4.4 cm)
Weight	12 oz (0.340 kg)

Control Arm
4-55040-6



Fits	4-52304-9 Head-Cam
Length	14"-19.5" (35.5-49.5 cm)
Weight	1.2 lbs (0.54 kg)

Pan and Tilt Adapter
4-55730-2



Fits	Hercules Column 1.25" (3.17 cm) I.D.
Accepts	Pan/Tilt QPT50/90/130
Flange Diameter	6" (15.24 cm)
Weight	2 lbs (.90 kg)

Theodolite Adapter
4-55142-0



Fits	Hercules Column 1.25" (3.17 cm) I.D.
Accepts	5/8-11 Female Thread
Rotates	360°
Flange Diameter	5.46" (13.9 cm)
Weight	2.36 lbs (1.07 kg)

Hi-Hat
4-75350-5



Accepts	Sleeve Mount Heads
Post Diameter	1.75" (4.4 cm)
Post Height	1.87" (4.7 cm)
Flange Diameter	5.62" (14.2 cm)
Overall Height	2.87" (7.2 cm)
Through Holes (4x)	0.418" (1 cm)
Bolt Circle	4.7" (11.9 cm)
Weight	1.4 lbs (0.63 kg)

Column Adapter
4-75750-6



Fits	Samson Column 1.75" (4.4 cm) O.D.
Accepts	Hercules Heads with 1.25" (3.1 cm) O.D. post
Weight	12 oz (.340 kg)

Spike-Tips
4-55110-7



Fits	4-53021-8 or 4-53220-6 Hercules Tripods
Weight	12 oz (0.340 kg)